



# Agilent M9018A 18-Slot PXIe Chassis

**DISCOVER** the Alternatives...

## Industries and Applications

- Aerospace and defense
- Communications
- Electronics test
- Semiconductor testing

## Product Description

The M9018A chassis delivers the ultimate flexibility, compatibility, and performance. With 16 PXIe hybrid slots, it allows the system designer to mix and match the number and location of PXIe and hybrid PXIe-compatible modules. The advanced PCIe® switch fabric can operate up to Gen 2 speeds and can be configured for optimal performance with any PXIe controller. The innovative cooling design allows the chassis to fit in 4U of rack space. When combined with the latest 1U rack-mounted computer, you can build a powerful system using only 5U of rack space.



... Agilent **Modular** Products

## Specifications and Characteristics

Models	
M9018A	PXIe chassis

## Main Features and Benefits

Product features	Your benefit
16 hybrid slots	Eases system integration with flexibility and compatibility
Gen 2 speeds as well as four x8 and 12 x4 links to module slots	Large data rate supports high-performance applications
Advanced PCIe switching	Provides configuration flexibility
Innovative cooling design	Saves rack space and lowers maintenance cost
867.5 W power supply	Provides power to spare for application requirements

Connector compatibility: PXI-1 and cPCI (J1 only), PXIe, PXI-H

Hardware	
Size	4U
Number of slots	18 total, 16 hybrid-compatible
Power supply output	
220-240VAC input	867.5 W <sup>1</sup>
100-120VAC input	667.5 W <sup>1</sup>
Power dissipation	
System slot	140 W max
User slot	42 W max <sup>2</sup>
System slot link configuration (selectable)	
2-link config for M9021A	1x8 (link 2 inactive)
2-link configuration	2x8
4-link configuration	4x4
Data bandwidth (max)	
Slot-to-slot	4 GB/s
System slot-to-user slots	8 GB/s

1. Depending on the modules used, the M9018A may not meet the power requirements in the PXI hardware specifications and would be considered a low-power chassis. It is recommended that power budgeting be employed, especially at low line.

2. Maximum per slot power dissipation at 55° C with 15° C temperature rise; requires: a) that the chassis bottom is not blocked (1U rack space below or sitting on bench with feet extended) or b) two air inlet modules in slots 9, 10, or 11, and a slot blocker in empty controller slots. Module cooling can be impacted by each module's resistance to air flow.



**Agilent Technologies**

## Software Information

The M9018A chassis comes with a soft front panel (SFP) graphical interface. This simple software application can be used to monitor and control the PXIe chassis. It has the following functions:

- Trigger configuration
- Chassis fan speed, temperatures, and rail voltage monitoring
- Alarms for fan speed, temperature, and rail voltage
- Chassis information

Operating systems	Microsoft Windows® XP Microsoft Windows® Vista (32/64-bit) Microsoft Windows® 7 (32/64-bit)
Standard compliant drivers	IVI-COM, IVI-C, LabVIEW, MATLAB
Supported application development environments (ADE)	VisualStudio® (C/C++,C#, VB.NET), LabVIEW, LabWindows/CVI, MATLAB, VEE
Agilent IO Libraries	Includes: VISA Libraries, Agilent Connection Expert, IO Monitor

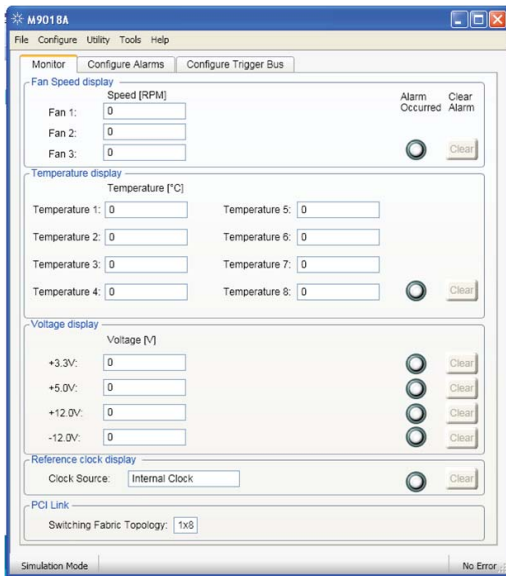


Figure 1. M9018A soft front panel

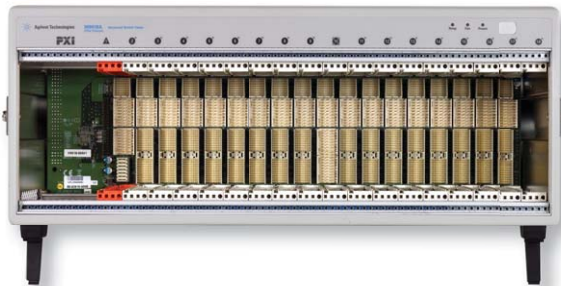


Figure 2. M9018A's all-hybrid backplane

PCIe® is a registered U.S. trademark and/or service mark of PCI-SIG. Microsoft, Windows, Visual Studio, Visual C++, Visual C#, and Visual Basic are either registered trademark or trademarks of Microsoft Corporation in the United States and/or other countries

## Typical Product Configuration

Model	Description
M9018A	18-slot PXIe chassis
M9021A	PCIe cable interface
M9047A	PCIe desktop PC adapter
Y1202A	2m PCIe cable

## Ordering Information

Model	Description
M9018A	PXIe chassis: 18-slot, 3U, 8GB/s
Opt 900-932	Power cord options

Related products	
M9021A	PCIe cable interface: Gen 2, x8
M9036A	Embedded PXIe PC controller
M9045B	PCIe ExpressCard adaptor: Gen 1
Y1200B	PCIe cable: x1 to x8, 2.0m (used with M9045B)
M9047A	PCIe desktop PC adapter: Gen 2, x8
Y1202A	PCIe cable: x8, 2.0m (used with M9047A)

Accessories	
Y1213A	PXI EMC filler panel kit
Y1214A	Air inlet module kit
Y1215A	Chassis rack mount kit for M9018A

## Advantage Services: Calibration and Warranty

Agilent Advantage Services is committed to your success throughout your equipment's lifetime.

R1280A	Extended warranty
--------	-------------------

## Discover Agilent ...



[www.agilent.com](http://www.agilent.com)

[www.agilent.com/find/modular](http://www.agilent.com/find/modular)

[www.agilent.com/find/pxi-chassis](http://www.agilent.com/find/pxi-chassis)

USA: (800) 829-4444

For more information on Agilent Technologies' products, applications, or services, please contact your local Agilent office. The complete list is available at: [www.agilent.com/find/contactus](http://www.agilent.com/find/contactus)

Product specifications and descriptions in this document subject to change without notice.

© Agilent Technologies, Inc. 2011 Printed in USA, November 1, 2011  
5990-6358EN



**Agilent Technologies**